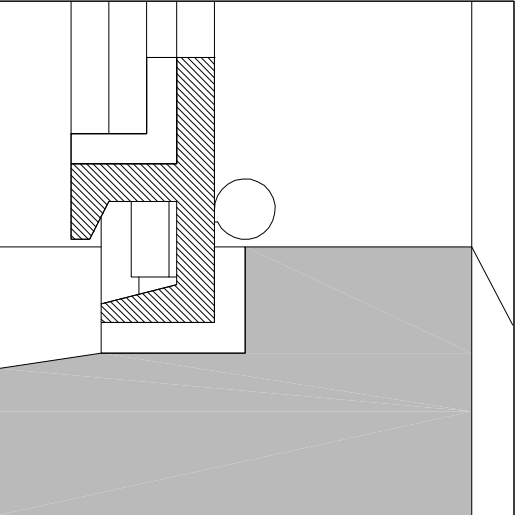
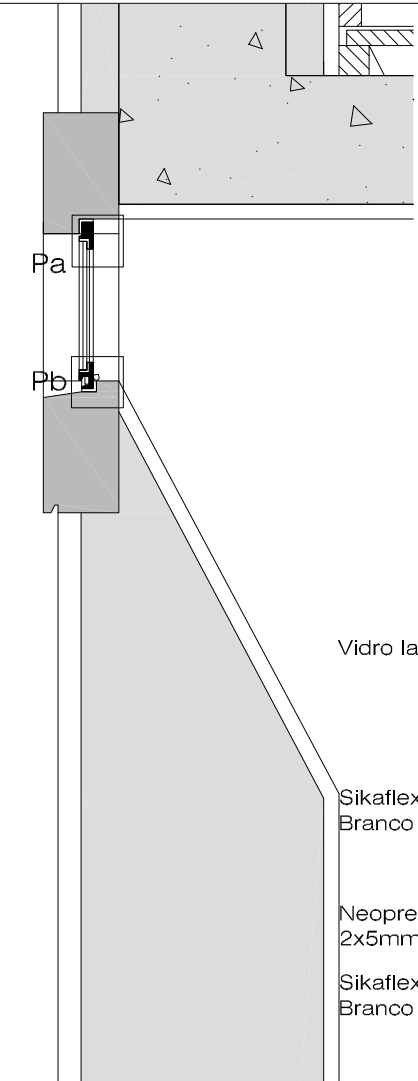


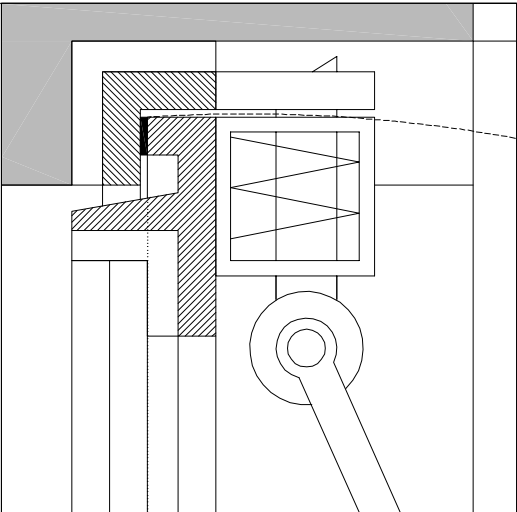
JF1 - Pormenor Pa Escala 1/1



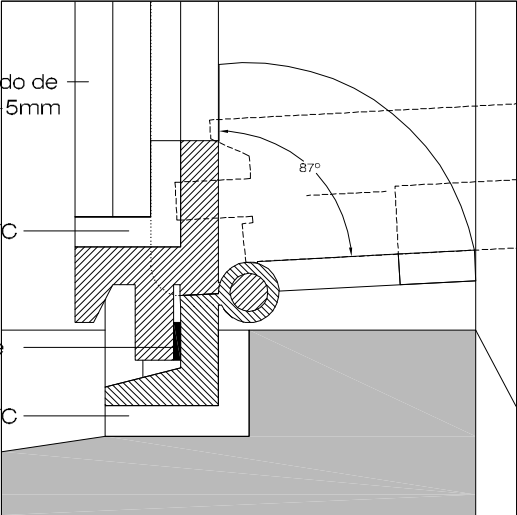
JF1 - Pormenor Pb Escala 1/1



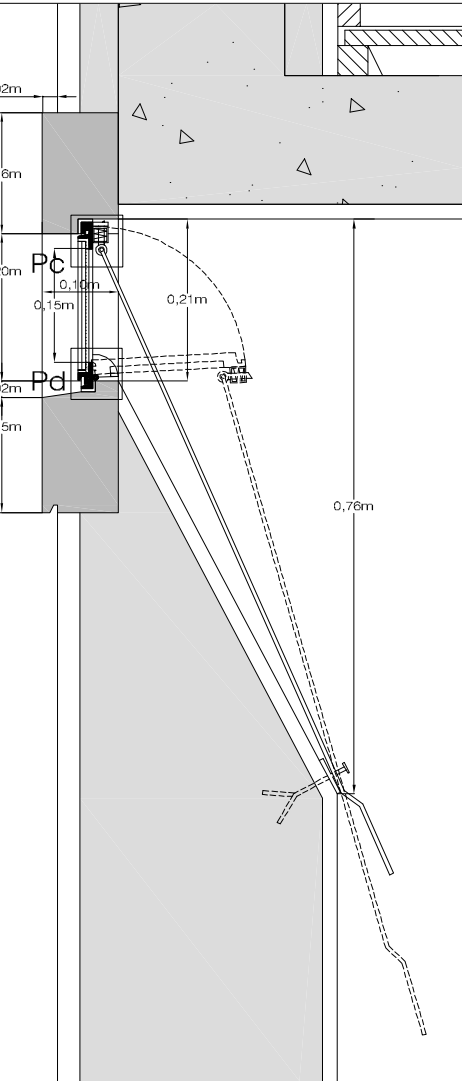
JF1-Corte Vertical-parte fixa Escala 1/10



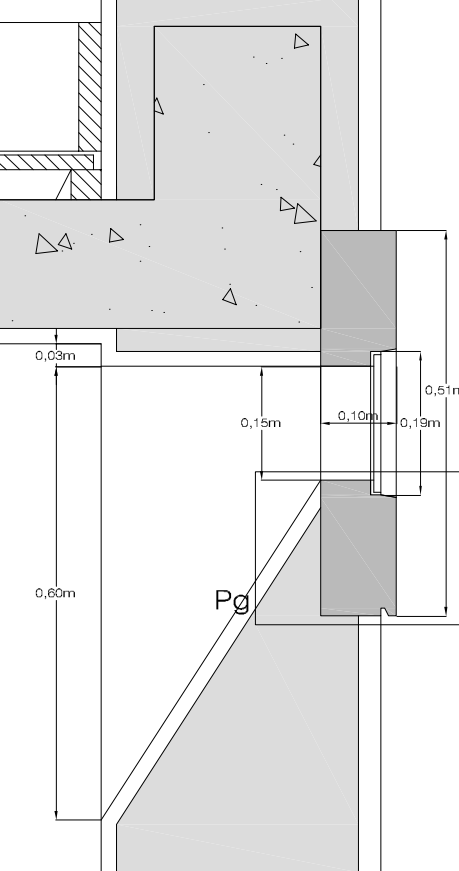
JF1 - Pormenor Pc Escala 1/1



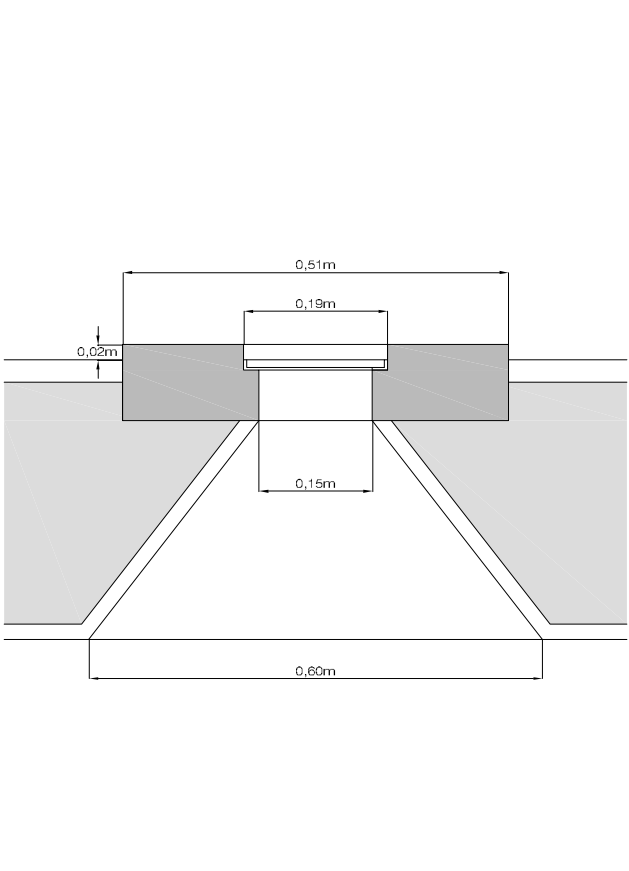
JF1 - Pormenor Pd Escala 1/1



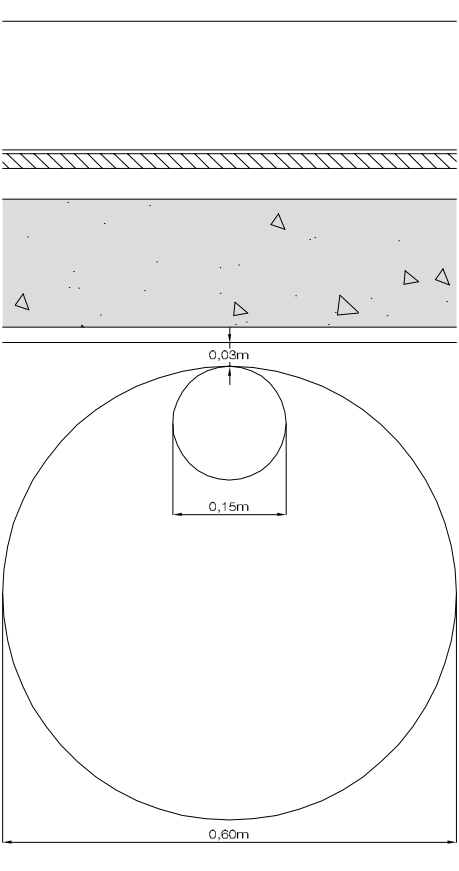
JF1-Corte Vertical-parte móvel Escala 1/10



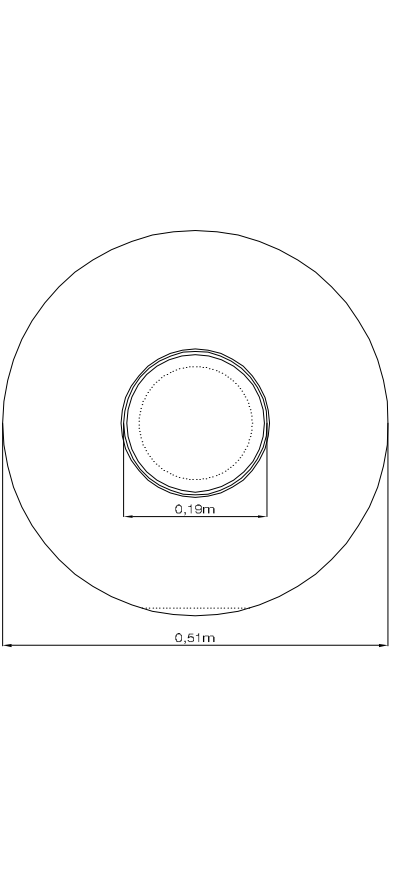
Corte Vertical JF2



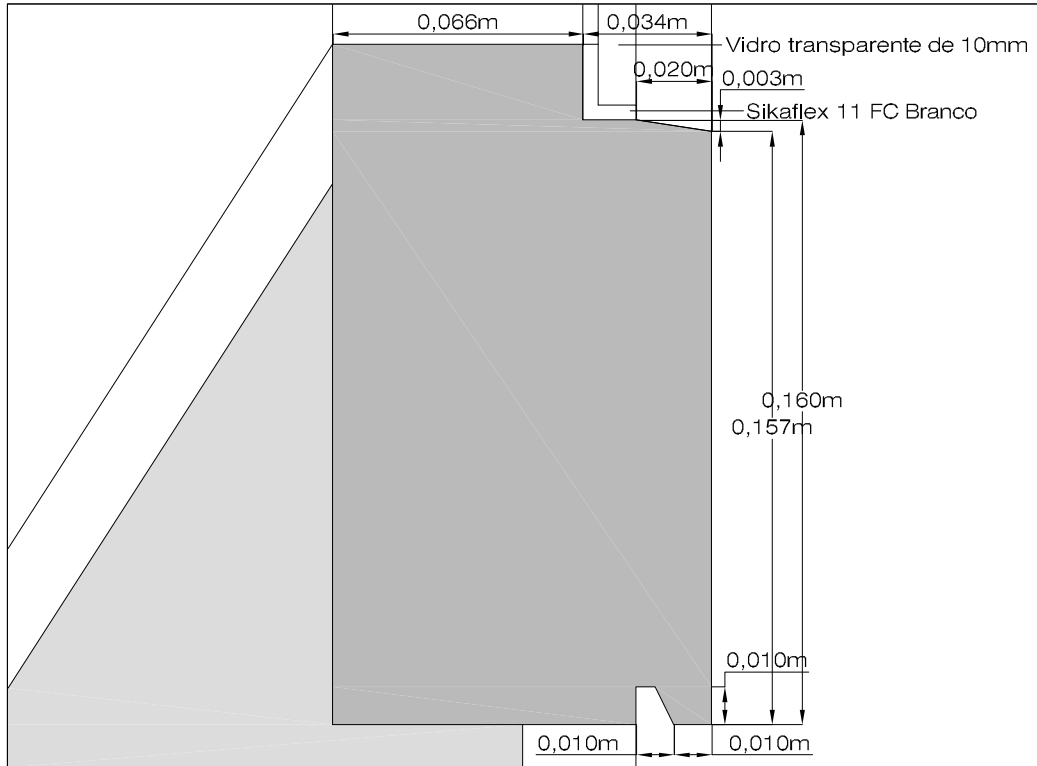
Corte Horizontal



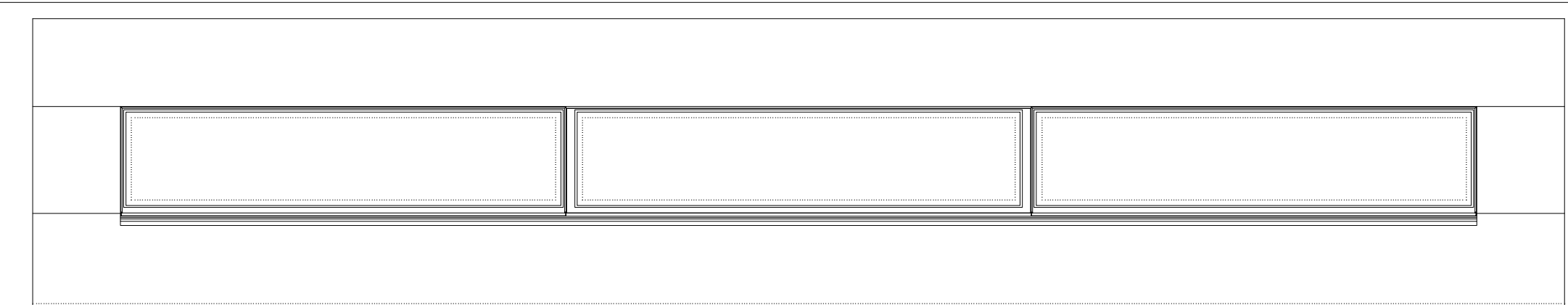
Alçado Interior



Alçado Exterior Escala 1/10



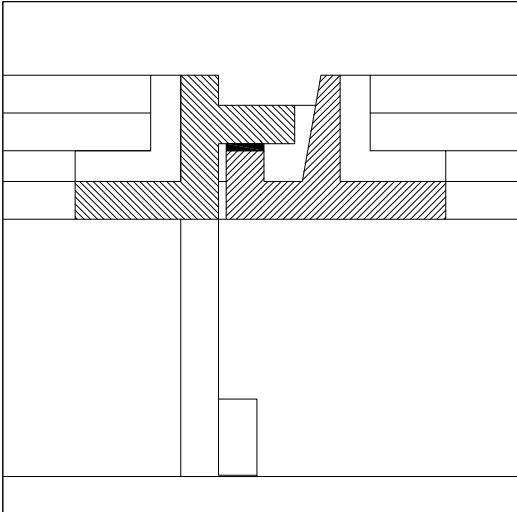
JF2 - Pormenor Pg Escala 1/2



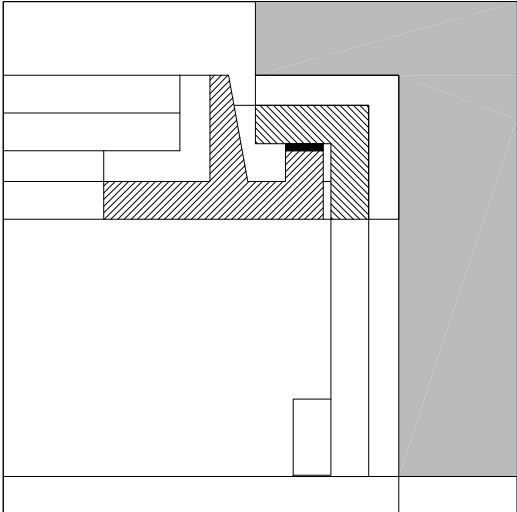
JF1 - Alçado Exterior Escala 1/10



JF1 - Corte Horizontal Escala 1/10

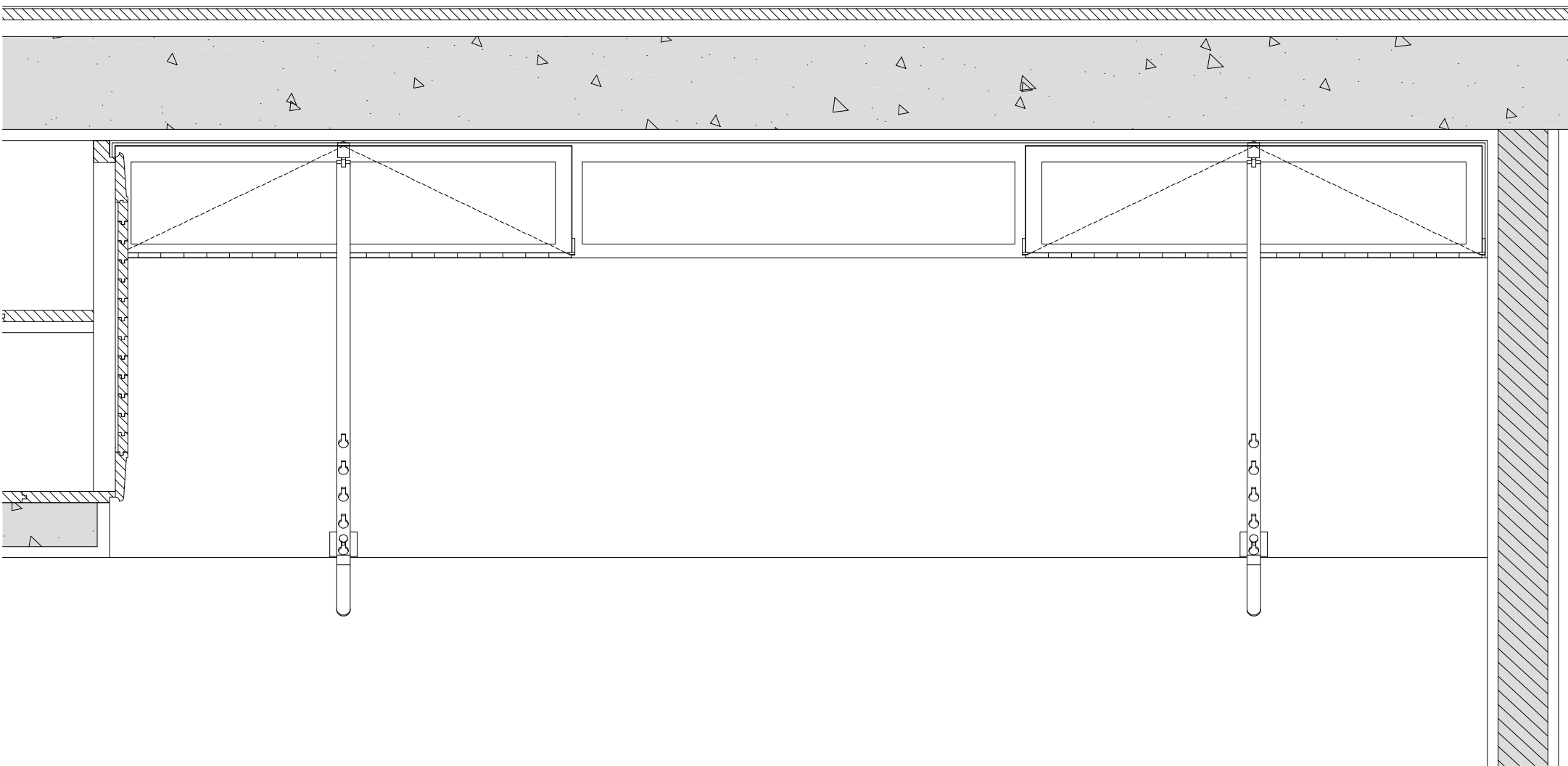


JF1 - Pormenor Pe Escala 1/2



JF1 - Pormenor Pf Escala 1/2

Nota:  
A janela JF1 deverá ser executada em perfis de ferro para pintar de branco, com todas as espessuras e demais especificações dos desenhos.



JF1 - Alçado Interior Escala 1/10

Este desenho é propriedade dos autores, não podendo ser reproduzido nem copiado sem autorização expressa.